



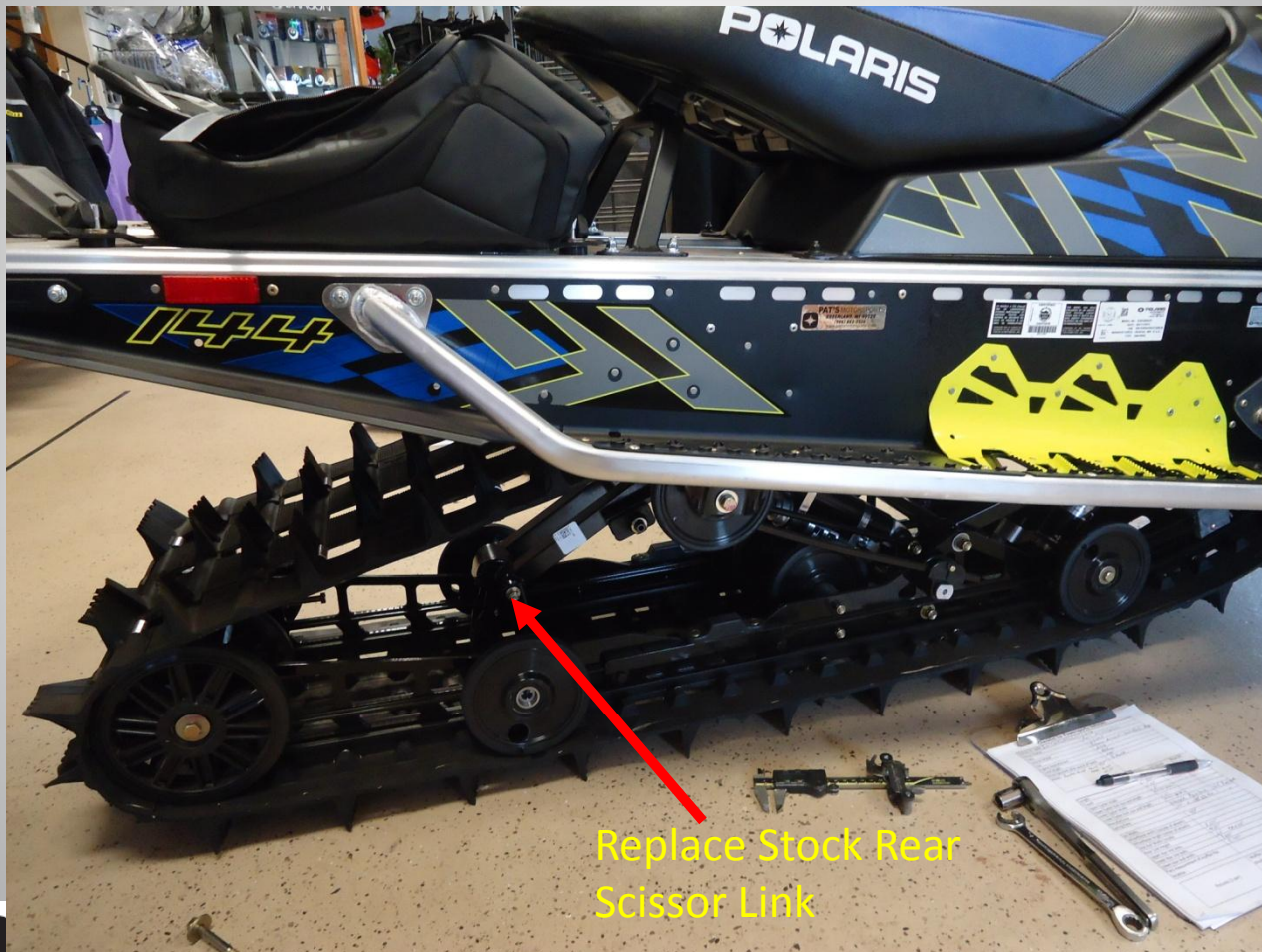
'11-'17 Switchback Assault (Switchback 144 Tipped) Mounting Instructions

Please note that GLSV assumes no responsibility for damage that may occur during installation. Snowmobiling presents inherent dangers. GLSV assumes no responsibility for damage, injuries, or casualties that result from the use of this product. By installing the product the purchaser agrees to release GLSV from any and all liabilities. GLSV will provide a full refund if purchaser does not agree to the above terms.



47140 N. Main Street
Houghton MI 49931
906.482.7530
www.EZRyde.com

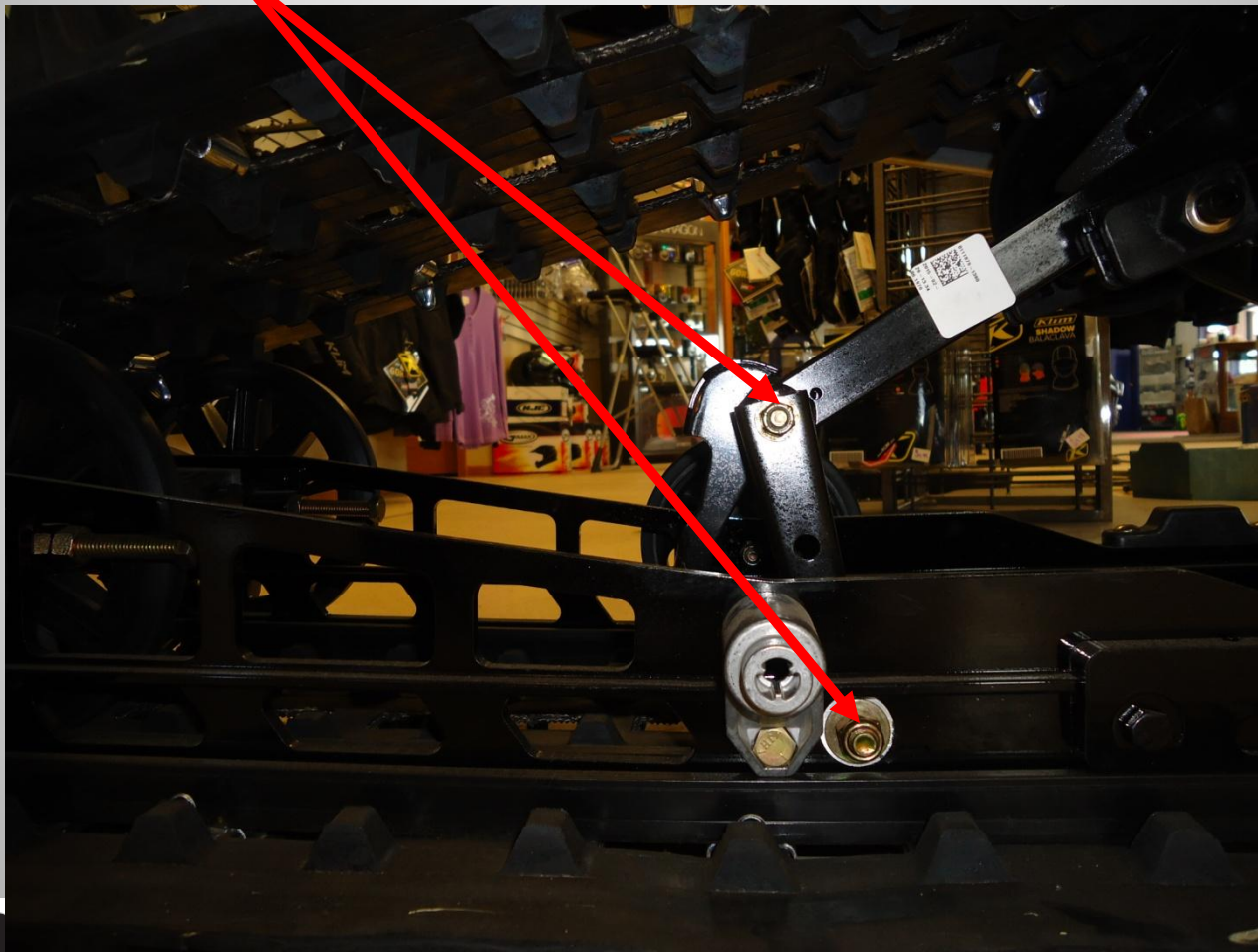
Stock



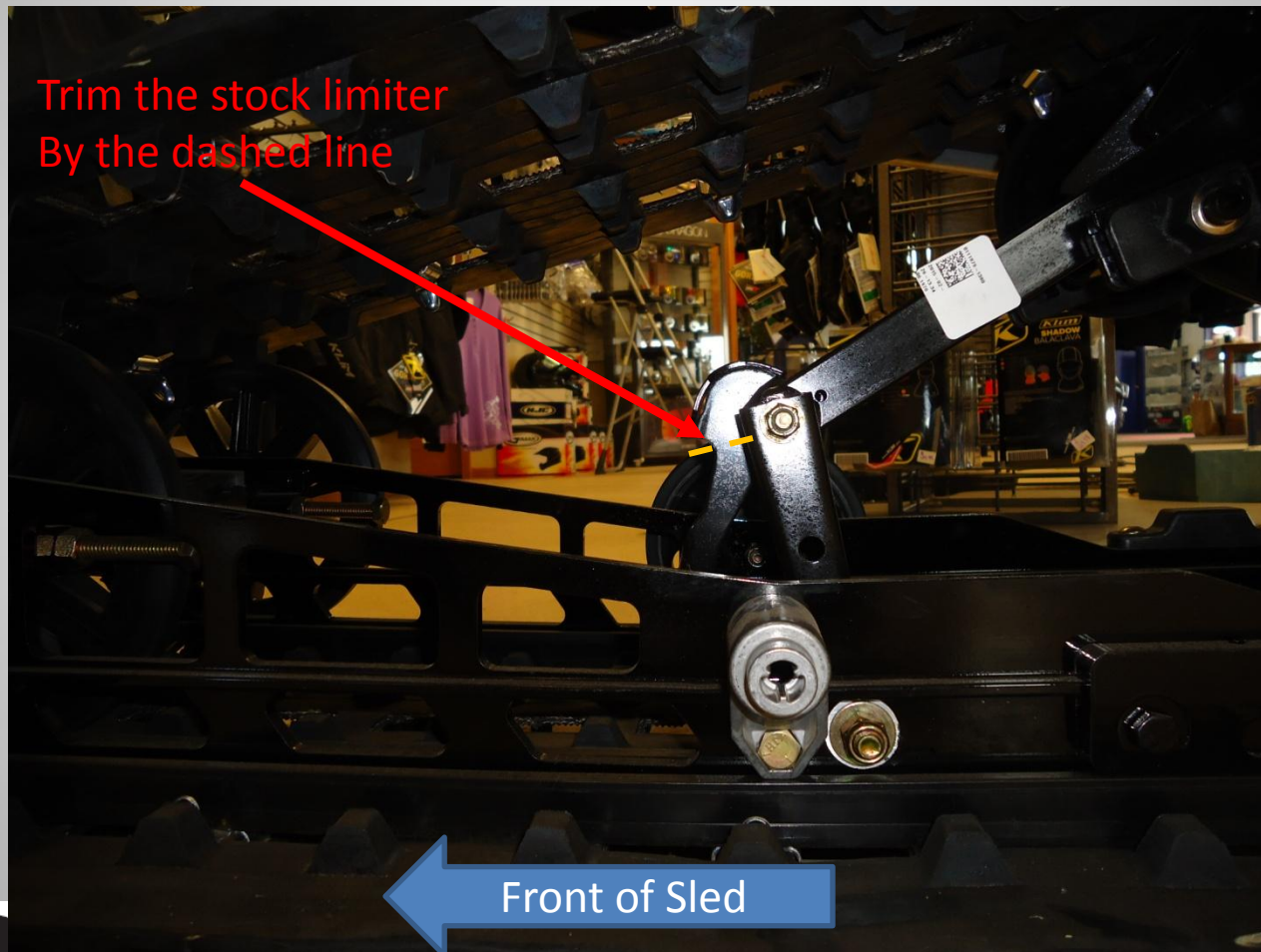
Replace Stock Rear
Scissor Link

Stock

Remove top and
Bottom bolts to remove
Scissor link



Trim Stock Limiter

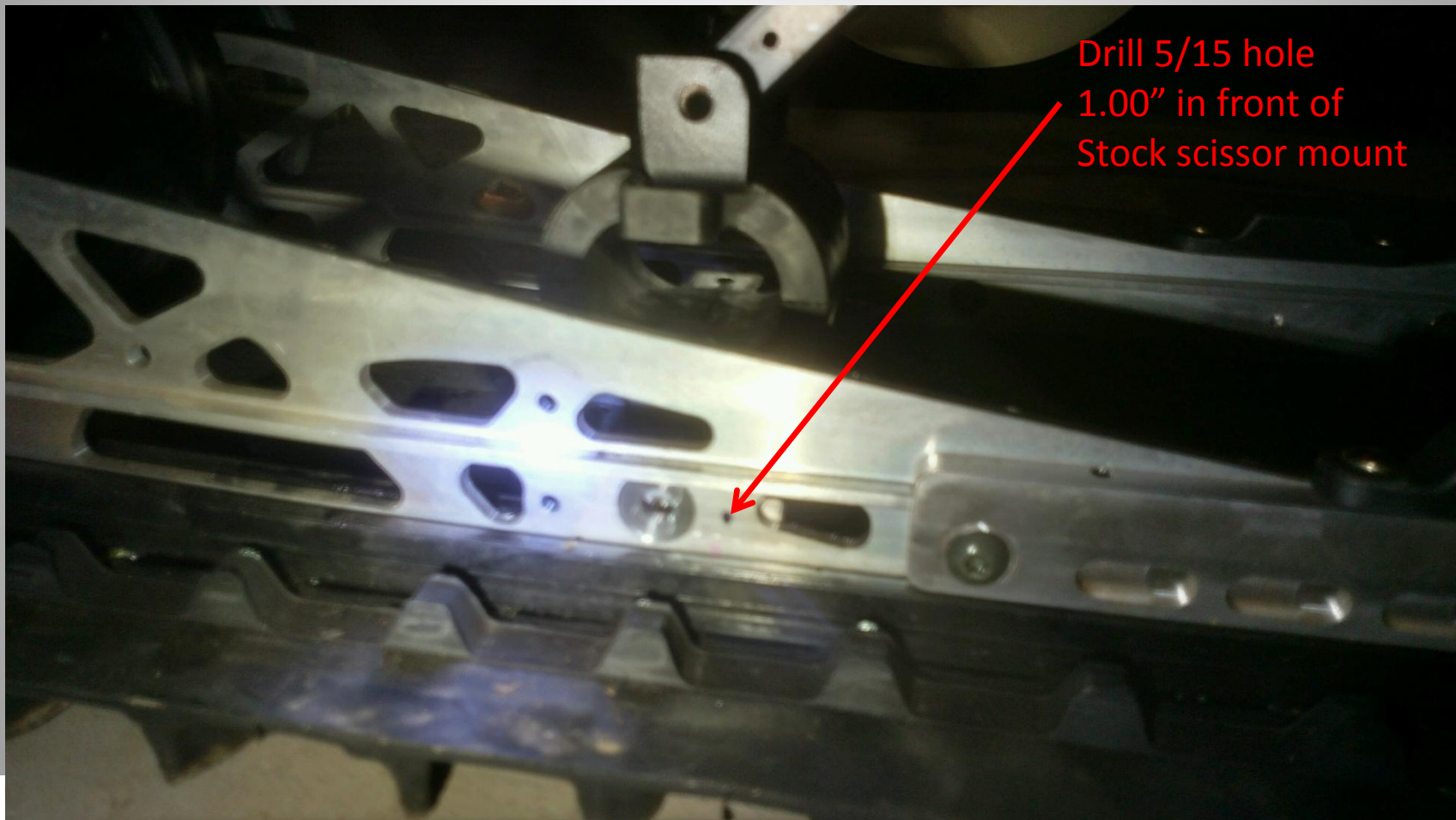


Assemble HELO and Brackets



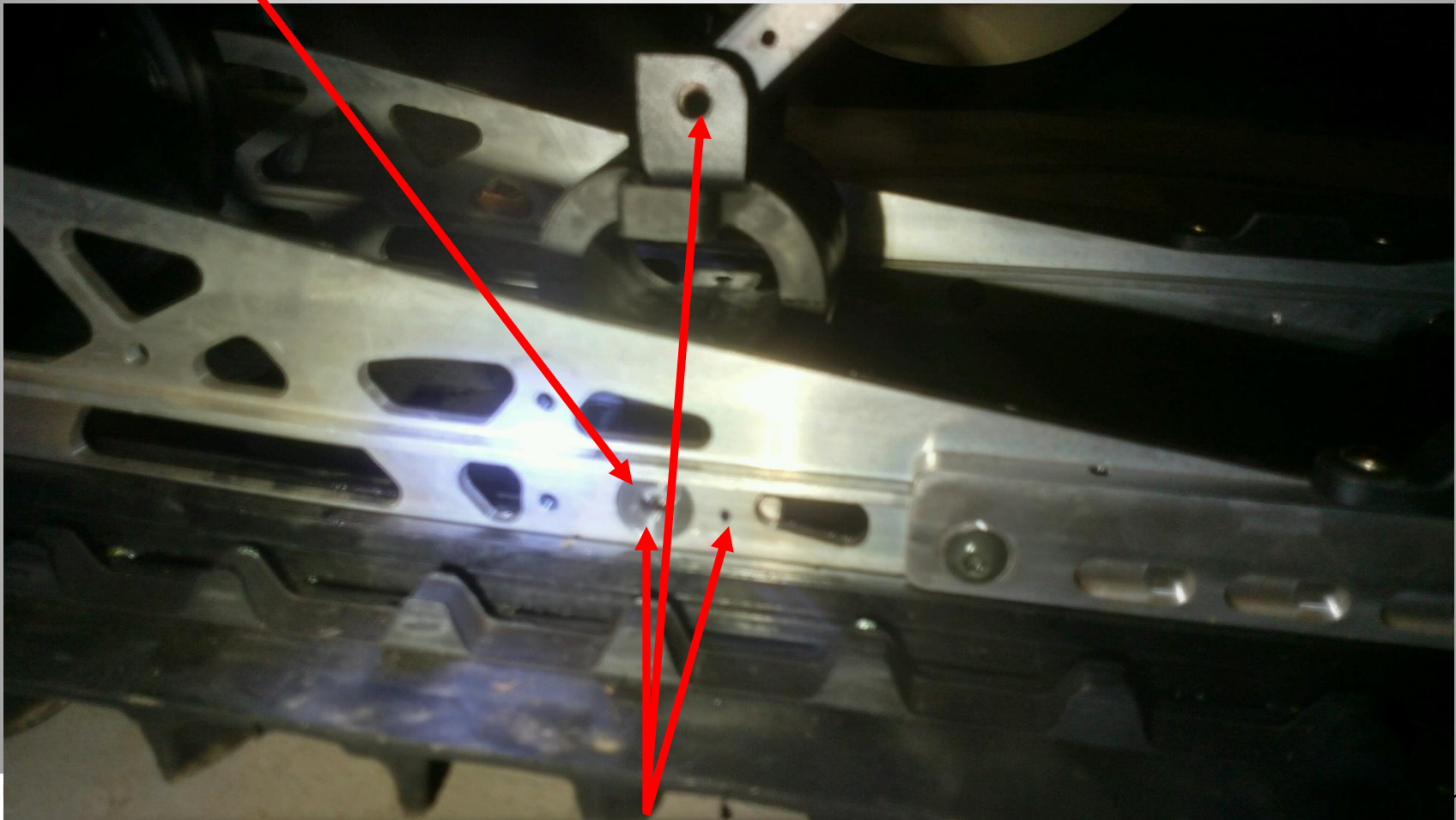
Use the RED Loctite
Provided in the
Mounting kit

Drill New Hole in Rail



Torque 5/16 fasteners
To 13 ft-lbs

Install HELO



Use Red Loctite on all Fasteners
Torque to 13 ft-lbs

Street
Houghton MI 49931
906.482.7530
www.EZryde.com

